

BÄST

MSS + förvaringssystem Sonic



MSS 

Ultimate workflow.



Self-supporting system

- Compatible to every working area - walls no longer needed
- Designed to endure long-term and intensive use
- All modules are made from a high quality 1.4mm steel construction.
- Easily adjustable in height



Drawers

- Maximum drawer capacity
- Less strain on the drawer and module which results in an improved lifetime
- Multiple drawer configurations available
- 100% retractable drawers
- Ergonomic handles for the perfect grip
- High drawers are equipped with ventilation slots
- Bottom drawers include integrated powerbar with 2x USB and 4x 110V/230V (except portable cabinets)



Safety drawer blocking system

- Constructive counter-measures with anti-tilt system
- Safety drawer blocking system ensures that only one drawer can be opened at a time
- MSS+ is fitted with a central lock system to lock all drawers and completely prevent access



Safe and secure

Most of MSS+ modules are equipped with an European fix code lock. This code lock is designed to provide convenient and safe security for personal storage or storage shared by small project teams. The combination can be freely programmed and changed whenever required by using the masterkey. Users do not have to carry around a key which eliminates security risk and costs involved replacing lost keys.

Drawer cabinets



5072001 (EU power bar)
720mm drawer cabinet, 8 drawers



5072002 (EU power bar)
720mm drawer cabinet, 6 drawers



5089001 (EU power bar)
890mm drawer cabinet, 8 drawers



5089002 (EU power bar)
890mm drawer cabinet, 6 drawers



5153901 (EU power bar)
1540mm drawer cabinet, 12 drawers

Portable cabinets



5072004
700mm portable cabinet extra deep,
7 drawers



5072005
700mm portable cabinet,
7 drawers



5089004
870mm portable cabinet extra deep,
7 drawers



5089005
870mm portable cabinet,
7 drawers



5089011
890mm service cart

Storage cabinets



5036001
360mm storage cabinet,
left-handed door
5036002
360mm storage cabinet,
right-handed door



5072009
720mm storage cabinet,
left-handed door
5072010
720mm storage cabinet,
right-handed door



5089009
890mm storage cabinet, double door



5106002
1060mm corner storage cabinet,
double door



5072011
720mm cabinet with sink,
double door

Reel cabinets



5036003
360mm reel cabinet



5072007
720mm reel cabinet



5089007
890mm reel cabinet



5071801
650mm reel tall cabinet

Wall cabinets



5071802
(EU power bar)
720mm wall cabinet

Posts

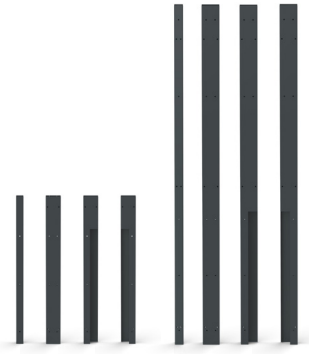


5072003
720mm topbox, 5 drawers



5089003
890mm topbox, 5 drawers

- 5999401 Post 50x50x1020mm
- 5999402 Post 100x50x1020mm
- 5999405 Post 50x50x1997mm
- 5999406 Post 100x50x1997mm
- 5999403 Post 100x50x1016mm for portable cabinet, right
- 5999404 Post 100x50x1016mm for portable cabinet, left
- 5999407 Post 100x50x1993mm for portable cabinet, right
- 5999408 Post 100x50x1993mm for portable drawer cabinet, left



5999937
Back panel for bridge unit
720mm, 657x740mm
5999938
Back panel for bridge unit
890mm, 827x740mm



5072012
720mm waste bin/recycle cabinet



5089012
890mm waste bin cabinet,
double door



5072013
720mm lift & power cabinet
Challenger



5072014
720mm lift & power cabinet
Rotary



5065501
650mm tall cabinet,
left-handed door
5065502
650mm tall cabinet,
right-handed door



5096501
965mm tall storage
cabinet, double door



5082001
(EU power bar)
820mm wall cabinet



5089010
(EU power bar)
890mm wall cabinet



5072008
(EU power bar)
720mm wall cabinet with tambour door



5089008
(EU power bar)
890mm wall cabinet with tambour door



5072015
619mm wall cabinet
with PC/laptop storage

Back panels



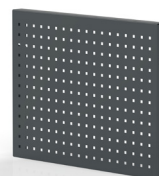
Blank back panel

- 5999901 259x50x120mm
- 5999902 619x50x120mm
- 5999903 719x50x120mm
- 5999904 789x50x120mm
- 5999930 959x50x120mm corner



Blank back panel

- 5999913 259x50x552mm
- 5999905 619x50x552mm
- 5999906 719x50x552mm
- 5999907 789x50x552mm
- 5999931 959x50x552mm corner



Square perforated back panel

- 5999922 259x50x552mm
- 5999923 619x50x552mm
- 5999924 719x50x552mm
- 5999925 789x50x552mm

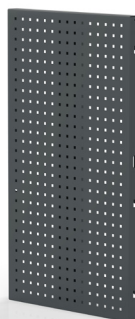
MSS+ Configurator

The unique MSS+ 3D configurator conveniently creates a premium tailor made workplace exactly to your needs. Say hello to ultimate workflow.



Blank back panel

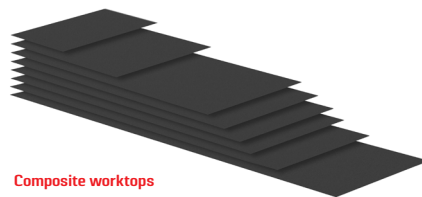
- 5999908 259x50x1104mm
- 5999909 619x50x1104mm
- 5999910 719x50x1104mm
- 5999911 789x50x1104mm
- 5999934 959x50x1104mm corner
- 5999912 619x50x1104mm blank back panel for monitor and keyboard



Square perforated back panel

- 5999926 259x50x1104mm
- 5999927 619x50x1104mm
- 5999928 719x50x1104mm
- 5999929 789x50x1104mm
- 5999936 959x50x1104mm corner

Worktops



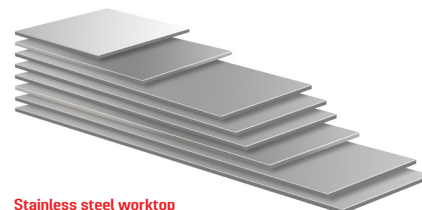
Composite worktops

- 5999801 360x650x2mm
- 5999802 720x650x2mm
- 5999803 890x650x2mm
- 5999804 1440x650x2mm (720+720mm)
- 5999805 1540x650x2mm
- 5999806 1610x650x2mm (720+890mm)
- 5999807 1780x650x2mm (890+890mm)
- 5999808 2160x650x2mm (720+720+720mm)

Thickness 2mm, depth 650mm

Composite worktops for portable cabinet

- 5999021 863x655x2mm
- 5999043 686x523x2mm
- 5999044 856x523x2mm
- 5999045 693x655x2mm



Stainless steel worktop

- 5999701 360x650x20mm
- 5999702 720x650x20mm
- 5999703 890x650x20mm
- 5999704 1441x650x20mm (720+720mm)
- 5999705 1540x650x20mm
- 5999706 1611x650x20mm (720+890mm)
- 5999707 1781x650x20mm (890+890mm)
- 5999708 2162x650x20mm (720+720+720mm)
- 5999711 2261x650x20mm (720+1540mm)
- 5999712 2332x650x20mm (720+720+890mm)
- 5999709 2431x650x20mm (890+1540mm)

Thickness 2mm, depth 650mm

Stainless steel worktop, portable cabinet

- 5999601 700x530x20mm
- 5999602 700x600x20mm
- 5999603 870x530x20mm
- 5999604 870x660x20mm

Thickness 20mm



Corner worktops

- 5999809 Composite worktop 1060x1060x2mm
- 5999710 Stainless steel worktop 1060x1060x20mm

Bridge units



SONIC



- 5070001 700mm bridge unit
- 5072006 720mm bridge unit
- 5089006 890mm bridge unit
- 5106001 1060mm bridge unit
- 5089013 890mm bridge unit with writing desk



Wooden worktop

- 5999501 1780x650x40mm

Thickness 40mm, depth 650mm



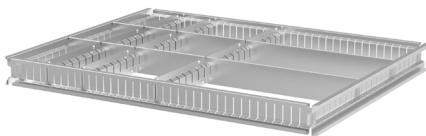
Dividers



5999305

Divider kit for 720mm cabinet contains:

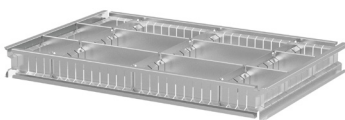
- 3 pcs MSS+ divider slot vertical (5999312)
- 2 pcs MSS+ divider slot vertical for the side (5999313)
- 2 pcs MSS+ divider slot horizontal (5999310)
- 4 pcs MSS+ divider spacer horizontal 88.60mm (5999307)
- 4 pcs MSS+ divider spacer horizontal 182.30mm (5999308)



5999306

Divider kit for 890mm cabinet contains:

- 3 pcs MSS+ divider slot vertical (5999312)
- 2 pcs MSS+ divider slot vertical for the side (5999313)
- 2 pcs MSS+ divider slot horizontal (5999311)
- 4 pcs MSS+ divider spacer horizontal 88.60mm (5999307)
- 4 pcs MSS+ divider spacer horizontal 182.30mm (5999308)



5999318

Divider kit for 700mm portable cabinet contains:

- 3 pcs MSS+ divider slot vertical (5999314)
- 2 pcs MSS+ divider slot vertical for the side (5999315)
- 2 pcs MSS+ divider slot horizontal (5999310)
- 4 pcs MSS+ divider spacer horizontal 88.60mm (5999307)
- 4 pcs MSS+ divider spacer horizontal 182.30mm (5999308)



5999319

Divider kit for 870mm portable cabinet contains:

- 3 pcs MSS+ divider slot vertical (5999316)
- 2 pcs MSS+ divider slot vertical for the side (5999317)
- 2 pcs MSS+ divider slot horizontal (5999311)
- 4 pcs MSS+ divider spacer horizontal 88.60mm (5999307)
- 4 pcs MSS+ divider spacer horizontal 182.30mm (5999308)
- 2 pcs MSS+ divider spacer horizontal 369.76mm (5999309)

Lighting



LED light length: 600mm

- 800-1000 Lm
- Color temperature: 6000-6500k
- White light
- Aluminium base + pc cover
- Mounting magnet included

LED light length: 800mm

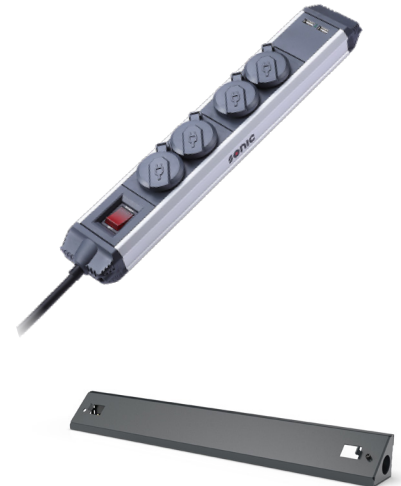
- 800-1000 Lm
- Color temperature: 6000-6500k
- White light
- Aluminium base + pc cover
- Mounting magnet included

- 5999201 LED light, length 600mm
- 5999202 LED light, length 800mm
- 5999203 Adaptor for LED light, USA plug
- 5999204 Adaptor for LED light, EU plug
- 5999205 Connector with switch for LED light
- 5999206 LED light 600mm (EU) with adaptor+connector
- 5999207 LED light 600mm (USA) with adaptor+connector
- 5999208 LED light 800mm (EU) with adaptor+connector
- 5999209 LED light 800mm (USA) with adaptor+connector

Features

- Find what you are looking for faster, without relying on surrounding lighting
- The latest technology is used
- Magnetic mountable under wall cabinet
- Increase your productivity with a perfectly lit work surface
- Energy efficient and extremely long lasting
- Maximum connection, circuit of 4 LED lights

Power supply



5999302 Power bar (EU power bar)

5999303 Power bar (USA power bar)

The MSS+ high performance power bars features a tough, anodized aluminium extrusion ensuring strength and durability.

Features

- Durable abs and aluminum housing
- 4 grounded outlets
- 2 USB outlets
- Lighted reset/off switch
- 5m cord
- Ergonomically designed, profiled body - robust and easy to grip
- Rugged anodised aluminium extrusion - lightweight and strong
- Pa6 nylon moulded outlets and endcaps - protects and insulates power supply
- High grade polychloropreen/neoprene rubber cable (oil, chemical and ozon resistant)
- Color RAL 7016

Remark

Cabinets with fixed drawers include power bar in bottom drawer.

5999301 Power bar bracket

- Angled power bar bracket can be mounted on the back panel
- Angle to the bracket provides clearance for cable leads and plugs bar
- The power bar bracket sits inside the backface of the post, this allows a back-to-back low level solution

Document holder



5999061

Measurements: 560mm wide, 40mm deep, 314mm high

- Convenient holder to store documents laptop or tablet
- Safety protection on all edges
- High quality 1.0mm steel construction

Laptop/tablet holder



5999304

Measurements: 447mm wide, 158mm deep, 365mm high

- Convenient holder for tablet/laptop
- Multifunctional
- Tilt function
- Mountable on back panels
- High quality 1.2mm steel construction

Optional:

Full range of colors upon request, longer lead time and additional fees could apply.



Sonic Foam System

- Customize drawer content with the unique Sonic Foam System
- Efficient organization of complete tool sets
- Two-tone foam color system for instant overview of missing tools
- Oil and chemical resistant
- Tool specifications visible on the foam inlay



123KG / 230KG

Slides

- Dutch-made sliding systems, with an option for capacities of 123kg or 230kg
- Highest quality heavy-duty slides available on the market
- Tailor-made MSS+ design that ensures maximum reliability



High availability

Since MSS+ is a modular system, Sonic can maintain a high stock, which ensures a complete set-up available quickly. In addition, our dedicated Sonic team ensures that all these modules are delivered with the best possible service and care.

MSS+

The greatest advantage of the MSS+ productline is that all modules are directly available in RAL 7016. Therefore your premium workplace with ultimate workflow can be realized as soon as you desire.

High quality powder coating

- All MSS+ modules have a high quality electrostatic powder coating
- This high quality finish offerst the best protection against scratches, wear and corrosion





- 5770006 Composite workstation
- 5771106 Stainless steel workstation

Measurements: W 2690 x D 700 x H 1125mm



- 5770004 Composite workstation
- 5771104 Stainless steel workstation

Measurements: W 3150 x D 700 x H 1125mm



- 5770002 Composite workstation
- 5771102 Stainless steel workstation

Measurements: W 3580 x D 700 x H 1125mm :



- 5770001 Composite workstation
- 5771101 Stainless steel workstation

Measurements: W 3600 x D 700 x H 1125mm



- 5770003 Composite workstation
- 5771103 Stainless steel workstation

Measurements: W 4040 x D 700 x H 1125mm



- 5881106 Stainless steel workstation

Measurements: W 3390 x D 700 x H 2105mm
Measurements: W 1780 x D 700 x H 1125mm



- 5770005 Composite workstation
- 5771105 Stainless steel workstation

Measurements: W 3220 x D 700 x H 1575mm



- 5771107 Stainless steel workstation

Measurements: W 3390 x D 700 x H 1125mm
Measurements: W 1780 x D 700 x H 1125mm



- 5880001 Composite workstation
- 5881101 Stainless steel workstation

Measurements: W 4060 x D 700 x H 2105mm



- 5880004 Composite workstation
- 5881104 Stainless steel workstation

Measurements: W 4060 x D 700 x H 2105mm



- 5880005 Composite workstation
- 5881105 Stainless steel workstation

Measurements: W 4760 x D 700 x H 2105mm



- 5660001 Wooden workstation

Measurements: W 1780 x D 650 x H 1045mm

More information available on our website or the Sonic catalog. The dimensions, drawings and illustrations contained in this folder shall not be binding and may be modified by us without further notice. All rights reserved.

**WORK
EFFICIENT
WORK
WITH SONIC**

SONIC EQUIPMENT BV
Component 114 - 116
1446 WP Purmerend
The Netherlands
Tel. +31 299 437 000
Fax +31 299 436 610
info@sonic-equipment.com

Sonic Equipment
 sonic.equipment
 Sonic Equipment Global
 Sonic Equipment BV



Kontakt:

order@jbmaskin.se

Tel: 031-788 30 00

jbmaskin.se